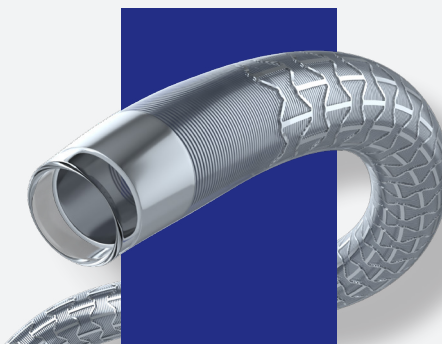




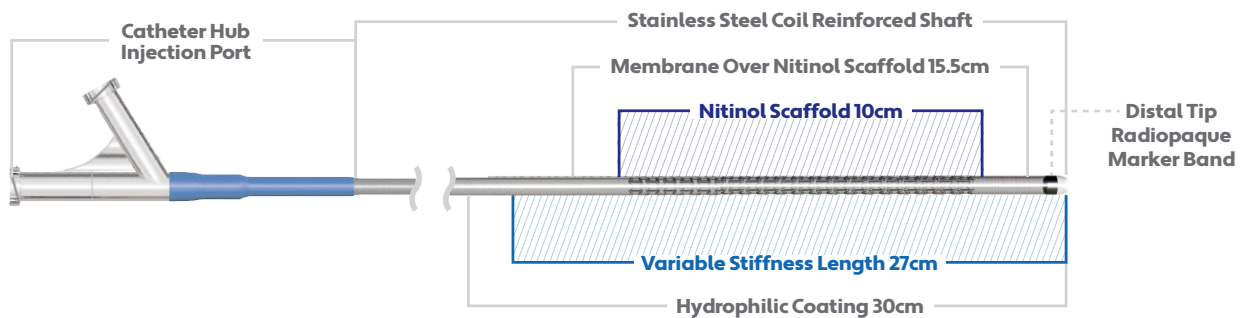
# I am Armadillo.

I'm a new sort of catheter for a transradial approach. My radial-access system is elegantly tailored to the demands of accessing neurovasculature through the radial pathway. Plus, I'm optimized with two modes for seamless adaptation.



## On the path to radial-access solutions, I'm leading the way.

The radial access approach is revolutionizing what's possible in neurovascular procedures—and I'm a front-line partner for caregivers propelling the profession forward. With my dual-mode capabilities and slick construction, I'm a solid option for the patient and a flexible one for the physician.



Tip Shape <b>Straight</b>	Outer Diameter (OD) <b>0.095"</b>	Guidewire Compatibility <b>0.035" - 0.038"</b>
------------------------------	--------------------------------------	---

### 0.072" ID

My 0.072-inch internal diameter enables procedural flexibility.

### 95cm, 105cm

My length and SelectFlex technology mean I'm a game-changer when it comes to trackability and support.

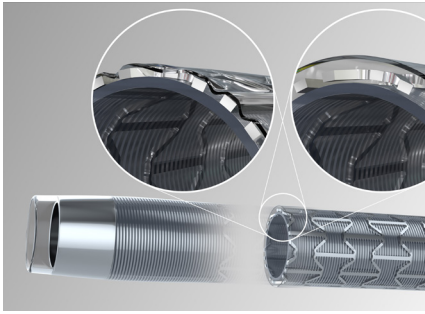
### 7 French

My 0.095-inch OD allows for compatibility with a 7 French system.

### Accessories

- Mode Control Syringe
- Peel-Away Introducer
- Luer-Activated Valve
- Dilator

# Here's how I deliver.



HOW I'M DIFFERENT —

## I'm nimble but solid.

When it comes to radial access, a slim profile is key—but so is superior support. With my kink-resistant construction, powerful coil design, and SelectFlex variable stiffness technology, I can navigate even the most delicate tortuosity, providing a tremendously stable platform.

**Attributes:**

- Dual-mode technology with tracking and support modes
- 27-centimeter variable support transition length

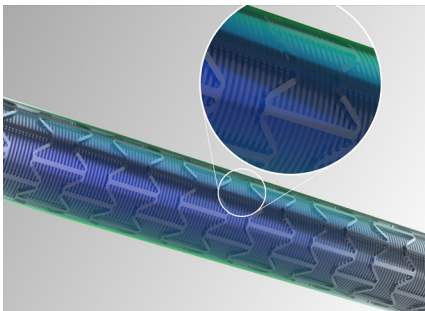
HOW I'M DIFFERENT —

## I'm a smooth operator.

With an all-in-one system and accompanying dilator accessory, I navigate acute bends with strength that outstrips my size and agility in the slimmest spots. How do I do it? With transition zones generated specifically for navigating through the anatomy from a radial approach.

**Attributes:**

- Elastically loaded tapered tip for a zero gap transition
- Dilator lengths vary with catheter length and have a luer-fitting connection



HOW I'M DIFFERENT —

## I'm actually quite advanced.

Fluidity is fundamental when it comes to navigating some of the most delicate blood vessels in the body. So I'm armed with a hydrophilic coating for optimal movement without resistance.

**Attributes:**

- 30cm of hydrophilic coating
- Lubricious and highly durable

Product Code	Description	Length	Variable Stiffness Length
SF7072-095-27-30	Selectflex, Armadillo 7F	95cm	27cm
SF7072-105-27-30	Selectflex, Armadillo 7F	105cm	27cm

We're Q'Apel, a medical technology company that creates solutions. More specifically, we design novel access device technology for vascular interventions and unmet clinical needs. Because in the precious seconds that surround a stroke emergency, clinicians need technology that delivers. That's where we come in.

Get in touch | [info@qapelmedical.com](mailto:info@qapelmedical.com) | [linkedin.com/company/q-apel-medical](https://www.linkedin.com/company/q-apel-medical)

©2023. Q'Apel Medical, Inc. All rights reserved. MKT 00621.F

**Q'Apel Medical**  
4245 Technology Drive  
Fremont, CA 94538

CALL TO INQUIRE: 510.738.6255

[qapelmedical.com](https://www.qapelmedical.com)